

Certificazione di Formazione musicale di base 2

Prova 1A: memorizzazione del basso



(Haendel)

Prova 1B: Corale



T T D T3 T S (D3) D D7 T3 D3/7 T D T
I I VII6 I6 I IV (V6) V V2 I6 V5/6 I V I

J. S. Bach: Dal Corale BWV45
"O Gott, du frommer Gott"

Prova 2A: lettura cantata modulante



F. Schubert: da "Rast" (orig. re min)

Prova 2B: lettura cantata nelle chiavi antiche

Benedictus.

Cantus. Be . . ne . di . ctus, qui ve . nit,

Altus. Be . . ne . di . ctus, qui

Tenor. Be . ne . di . ctus, qui ve . . nit, be . ne . di .

Bassus. Be . . ne .

be . . ne . di . ctus, qui ve . nit in nomi .

ve . nit, be . . ne . di . ctus, qui ve . .

. . . ctus, qui ve . . nit

. di . ctus, qui ve . . nit in nomi . ne Do . .

(Palestrina)

Prova 2C: lettura cantata accompagnata

T S T D D7

I IV I V V7

Tp Sp D7

VI II V7

Tp Sp D T

VI II V I

Detailed description: The score is for a 3/4 time piece. The first staff has a melody with notes G4, A4, B4, C5, B4, A4, G4, F4, E4, D4. Chords below are I, IV, I, V, V7. The second staff has a melody with notes G4, A4, B4, C5, B4, A4, G4, F4, E4, D4. Chords below are VI, II, V7. The third staff has a melody with notes G4, A4, B4, C5, B4, A4, G4, F4, E4, D4. Chords below are VI, II, V, I. There are also guitar-specific markings: 'Tp' (Tritono) above the first and third staves, and 'Sp' (Sexta) above the second and third staves. A triplet of eighth notes is marked in the third staff.

Prova 3A - Lettura ritmica a 2 parti

3/4

3/4

(♩ = ♩)

5 3 3 3 4

7 (♩ = ♩) 2

3 3 3 6

Detailed description: The score is for a 3/4 time piece. It consists of three systems of two staves each. The first system is in 3/4 time and features a complex rhythmic pattern with eighth and sixteenth notes, including a triplet of eighth notes. The second system changes to 9/8 time and features a complex rhythmic pattern with eighth and sixteenth notes, including a triplet of eighth notes and a group of four sixteenth notes. The third system changes to 15/8 time and features a complex rhythmic pattern with eighth and sixteenth notes, including a triplet of eighth notes and a group of six sixteenth notes. Fingerings are indicated by numbers 1-5 above notes. A tempo marking '(♩ = ♩)' is present between the first and second systems.

Prova 4A - Test di teoria musicale

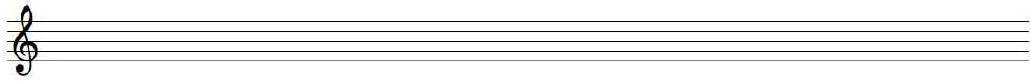
- 1) Qual è la tonalità del frammento sotto riportato? e la sua relativa?
- 2) Classificare in maniera completa gli intervalli nel cerchietto

a _____ b _____ c _____ d _____

- 3) Indicare con una sigla internazionale gli accordi contrassegnati dai numeri

1 _____ 2 _____ 3 _____

- 4) Scrivere su pentagramma la scala minore melodica che presenta 4 diesis in chiave



- 5) Indica sullo spartito un abbellimento denominandolo



F. Mendelssohn: Romanza senza parole op.19 n°5

Prova 4B - Lettura estemporanea parlata

The image displays three systems of musical notation for a piano piece. Each system consists of a treble and bass staff joined by a brace on the left. The key signature is three sharps (F#, C#, G#). The first system starts with a treble staff containing a 2-measure rest, followed by a melodic line with a 4-measure rest. The bass staff begins with a 2-measure rest, followed by a bass line with a 3-measure rest. A tempo marking $(\text{♩} = \text{♩})$ is placed below the first system. The second system begins with a 7-measure rest in the treble staff, followed by a melodic line with a 3-measure rest and a 6-measure rest. The bass staff starts with a 5-measure rest, followed by a bass line with a 3-measure rest. The tempo marking $(\text{♩} = \text{♩})$ is placed above the second system. The third system starts with a 13-measure rest in the treble staff, followed by a melodic line with a 3-measure rest and a 4-measure rest. The bass staff begins with a 2-measure rest, followed by a bass line with a 2-measure rest. The tempo marking $(\text{♩} = \text{♩})$ is placed above the third system.

Prova 4C: trascrizione da strumenti traspositori

The image displays a page of musical notation for Schubert's Symphony No. 4, specifically a transcription for transposing instruments. The score is organized into three main sections, each with two staves (treble and bass clef):

- CL Sib** (Clarinet in B-flat): The top section, featuring a melodic line with various dynamics such as *p*, *f*, and *ff*.
- CORNI IN Sib** (Horns in B-flat): The middle section, showing a similar melodic line with dynamics including *f* and *ff*.
- VIOLE** (Violins): The bottom section, containing a more rhythmic and melodic line with dynamics like *f* and *ff*.

The notation includes various musical symbols such as notes, rests, slurs, and dynamic markings. The key signature is B-flat major, and the time signature is 4/4. The score is presented in a clear, professional layout with distinct staves and labels.

Schubert: Sinfonia n°4